



Asian Arts Council

**STUDY GROUP CALENDAR, FY 2014-2015**

**Transmission and Transformation:  
Artistic Interactions along East-West  
Historic Trade Routes (including the Silk Road)**

**Monday, September 15 - 10 a.m.**  
History and Geography of the  
Silk Roads

Joyce Johnson & Jim Richter

**Monday, October 20 - 10 a.m.**  
Manila Galleon Trade

Miriam Jupp

**Cave Sculpture/Paintings**  
Sandi Calabough

**Monday, November 17 - 10 a.m.**  
Persian Art of the Silk Road

Marilyn Adams

**Jade Carving and Collecting in  
Iran and India**

Marika Sardar, Ph.D.

**Monday, January 12 - 10 a.m.**  
Early People & Language

Chia-Hui Shih

**Mountains & Gandaran Art**  
Joanne Watson

**Monday, February 9 - 10 a.m.**  
Music Along the Silk Road

Leean Knetzer

TBA, Barbara Hollowell

**Monday, March 16 - 10 a.m.**  
TBA, Sherry Reed

**Chinese Tombs**  
Maria Prokocimer

**Monday, April 20 - 10 a.m.**  
Siebold and Hokusai

Hilda Yoder, Ph.D.

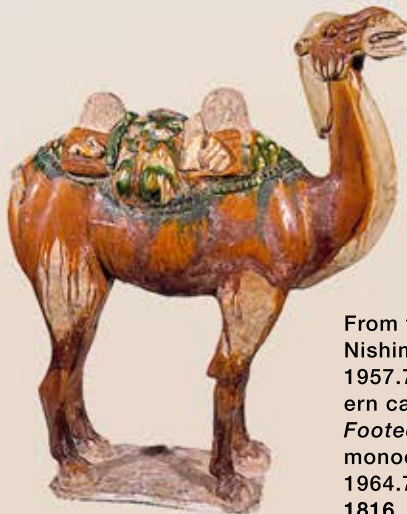
TBA, Ping-Hui Ku

**Monday, May 18 - 10 a.m.**  
TBA, Solange Thompson

TBA, Paula Des Jardins

**Monday, June 15 - 10 a.m.**  
TBA, Allie Arnell

**Chinese porcelains  
on the Silk Road**  
Helen Anderson



[AACsdmART.org](http://AACsdmART.org)

BALBOA PARK

**THE SAN DIEGO  
MUSEUM OF ART**

From top: *Chinese General Guan Yu on Horsesback*. Nishimura Shigenaga (1697-1756) The 1740-50. 1957.73. *Standing Bodhisattva*. ca 565 CE, Northern caves at Xiangtangshan. Limestone 1957.435. *Footed Bowl*, Iran, Stonepaste, molded, with a monochrome turquoise glaze, 12-13 century. 1964.74. *Still-life with Peaches*, Raphaelle Peale. ca. 1816. Oil on panel. 1981.38.3. *Camel*. 8th CE. Tang dynasty Earthenware. 1941.84.a